

# Getting Ready for Your Blue Light Cystoscopy with Cysview<sup>®</sup>

Patient Name: \_\_\_\_\_

Date/Time of Procedure: \_\_\_\_\_ @ \_\_\_\_\_ AM/PM

Location: \_\_\_\_\_

## Healthcare Provider Contact Information

\_\_\_\_\_  
\_\_\_\_\_

 Arrival Time: \_\_\_\_\_

## Description of procedure



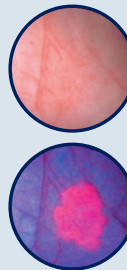
- 1** It is essential for you to arrive early for your procedure. Your arrival time is critical for its success. One hour before the procedure, you will receive an optical imaging agent called Cysview to prepare your bladder.



- 2** A small amount (2 oz) of Cysview will be placed into your bladder through a catheter. You will be asked to hold it in your bladder for as long as you can during the hour before your procedure.



- 3** During the Blue Light Cystoscopy with Cysview procedure, your healthcare professional will look into your bladder through a cystoscope using white light then blue light.



- 4** In blue light, Cysview makes abnormal cells easier to identify. It causes tumor cells to glow bright pink under blue light, but it is not a dye. Because cancer is more visible, your healthcare professional can better assess your bladder health and take the most appropriate next steps in your care.

## Preparing for your cystoscopy

Your procedure will be performed in the:

\_\_\_\_\_ hospital \_\_\_\_\_ clinic

Patient Instructions: \_\_\_\_\_  
\_\_\_\_\_  
\_\_\_\_\_



Be sure to follow any instructions noted above and any directions from your healthcare professional about the medications and supplements you take.

**CYSVIEW<sup>®</sup>**  
Hexaminolevulinate HCl

See back for Important Risk & Safety Information for Cysview.

## After the procedure



You may experience:

- Bladder spasms
- Trouble urinating
- Discomfort when urinating
- Frequent urination
- Blood in your urine
- Bladder pain



Follow your discharge instructions carefully.



Be sure to contact your physician's office with any issues or concerns.



It's a good idea to drink plenty of fluids after any cystoscopy.

To learn more, go to [Cysview.com](https://www.cysview.com)

### Product Indication

Cysview is an optical imaging agent indicated for use in the cystoscopic detection of carcinoma of the bladder, including carcinoma in situ (CIS), among patients suspected or known to have lesion(s) on the basis of a prior cystoscopy, or in patients undergoing surveillance cystoscopy for carcinoma of the bladder. Cysview is used with the KARL STORZ D-Light C Photodynamic Diagnostic (PDD) system to perform Blue Light Cystoscopy (BLC<sup>®</sup>) as an adjunct to White Light Cystoscopy.

### Important Risk & Safety Information

Cysview is not a replacement for random bladder biopsies or other procedures used in the detection of bladder cancer.

Anaphylactoid shock, hypersensitivity reactions, bladder pain, cystitis, and abnormal urinalysis have been reported after administration of Cysview. The most common adverse reactions seen in clinical trials were bladder spasm, dysuria, hematuria, and bladder pain.

Cysview should not be used in patients with porphyria, gross hematuria, or with known hypersensitivity to hexaminolevulinate or any derivative of aminolevulinic acid. Cysview may fail to detect some malignant lesions. False positive fluorescence may occur due to inflammation, cystoscopic trauma, scar tissue, previous bladder biopsy and recent BCG therapy or intravesical chemotherapy. No specific drug interaction studies have been performed.

Safety and effectiveness have not been established in pediatric patients. There are no available data on Cysview use in pregnant women. Adequate reproductive and developmental toxicity studies in animals have not been performed. Systemic absorption following administration of Cysview is expected to be minimal. There are no data on the presence of hexaminolevulinate in human or animal milk, the effects on a breastfed infant, or the effects on milk production. The development and health benefits of breastfeeding should be considered along with the mother's clinical need for Cysview and any potential adverse effects on the breastfed infant from Cysview or from the underlying maternal condition.

Cysview is approved for use with the KARL STORZ D-Light C Photodynamic Diagnostic (PDD) system. For system set up and general information for the safe use of the PDD system, please refer to the KARL STORZ instruction manuals for each of the components.

**Prior to Cysview administration, read the Full Prescribing Information and follow the preparation and reconstitution instructions.**

**CYSVIEW<sup>®</sup>**  
Hexaminolevulinate HCl



THE  
BLADDER CANCER  
COMPANY™